

DETROIT
FLEX
DEFENSE

A DETROIT FLEXIBLE METAL PRODUCTS COMPANY

PTFE HOSE CATALOG

Sales@detroitflexdefense.com

2921 Industrial Row | Troy, MI 48084

DFD 248.280.0030 FAX 248.280.0038

Copyright Detroit Flexible Metal Products. All Rights Reserved

COPYRIGHT 2023



Table of Contents

- Safety.....1
- Insert Guide.....2
- Sealing Ends.....3
- Insert Body Types.....4
- Fitting Clocking.....5
- Hose Covering Types.....6
- Insulation Options.....7
- Temperature Controlled Assemblies.....8
- Specialty Assemblies.....9
- Installation.....10
- Low Pressure PTFE Hose
 - Convoluted
 - H9059.....11
 - H9059PB.....12
- Medium Pressure PTFE Hose
 - Smoothbore
 - H9007/H9008.....13
 - H9044.....14
 - H9016.....15
 - H9024.....16
 - H9032.....17
 - H9034.....18
 - H9052.....19
 - Convoluted
 - H9001/H9002.....20
 - H9070/H9071.....21
 - H9018.....22
 - Smoothbore/Convoluted
 - H9037/H9038.....23
 - H9045/H9046.....24
- High Pressure PTFE Hose
 - Smoothbore
 - H9017.....25
 - H9005.....26
 - H9012/H9013.....27
 - H9019.....28
- Super-High Pressure PTFE Hose
 - Smoothbore
 - H9006.....29

Safety

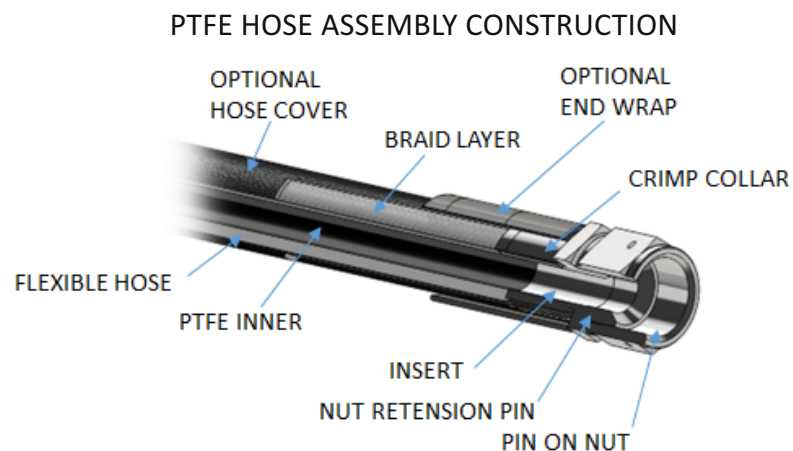
Safety:

- Select proper hose assemblies for the application.
- Refer to standards and regulations that apply in the countries where the hose assembly will be used
- Follow hose assembly installation best practices
- Only use hose that is designed to transmit the media for the application
- Avoid fluid injection injuries
- Always wear eye protection around hose assemblies that are under pressure

Hose Selection:

Below is a **general guide to the steps necessary for hose selection.**

- What is the applicaiton for this hose assembly?
- Where will the hose be used?
- Hose Size
- Operating Pressures
- Minimum Bend Radius
- Temperature
 - Internal
 - External
- Fluid Compatibility
- Weight
- End Fittings
 - Type
 - Material
- Standards or Regulations that must be met



AN Sizing Convention:

Barbs, sealing ends and hose sizes generally use the AN, (Army/Navy) sizing nomenclature. The size is coded in 1/16 of an inch. For example, a -8 fitting size is 8/16, or ½". A -16 would be 16/16, or 1", and a -32 would be 32/16 or 2", etc.

Sales@detroitflexdefense.com

2921 Industrial Row | Troy, MI 48084

DFD 248.280.0030 FAX 248.280.0038

Copyright Detroit Flexible Metal Products. All Rights Reserved

COPYRIGHT 2023



Insert Guide

Every Detroit Flex Defense Hose Insert is machined to Aerospace quality standards and tolerances. In addition to our standard fittings, DFD has the capabilities to provide fully custom options in a wide array of materials, sealing faces and configurations.

Insert Materials:

Inserts are available in a variety of materials - including, but not limited to:

- 304 Stainless Steel
- 316 Stainless Steel
- 321 Stainless Steel
- 7075 Aluminum
- 2024 Aluminum
- 6061 Aluminum
- Titanium
- Carbon Steel
- Brass
- Inconel

Insert Body Configurations:

Inserts are available in a variety of configurations including -

- Straight
- 45°
- 90°
- Custom Angles Available

Sales@detroitflexdefense.com

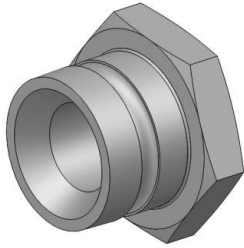
2921 Industrial Row | Troy, MI 48084

DFD 248.280.0030 FAX 248.280.0038

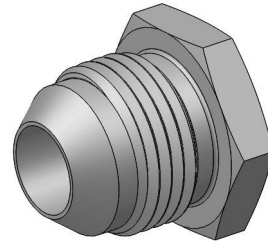
Copyright Detroit Flexible Metal Products. All Rights Reserved



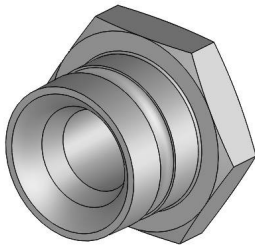
Sealing Ends



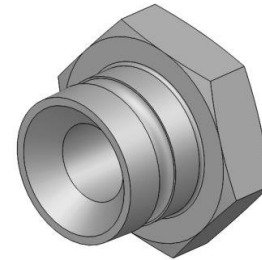
Female 37° JIC, Pin-On Nut



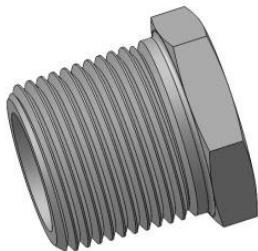
Male 37° JIC



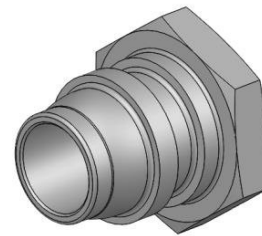
Universal Seat, Pin-On Nut



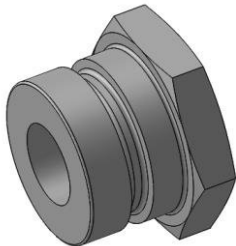
Female 45°, Pin-On Nut



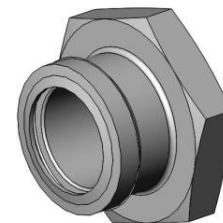
Male NPT



Flareless, Pin-On Nut



Female O-Ring Face Seal, Pin-On Nut



Beamseal, Pin-On Nut

NOTES: Pressure and vacuum ratings may change according to end connections

Sales@detroitflexdefense.com

2921 Industrial Row | Troy, MI 48084

DFD 248.280.0030 FAX 248.280.0038

Copyright Detroit Flexible Metal Products. All Rights Reserved

COPYRIGHT 2023



Insert Body Types

Straight



Forging



Billet



One- Piece Bent Tube



NOTES: Pressure and vacuum ratings may change according to end connections

Sales@detroitflexdefense.com

2921 Industrial Row | Troy, MI 48084

DFD 248.280.0030 FAX 248.280.0038

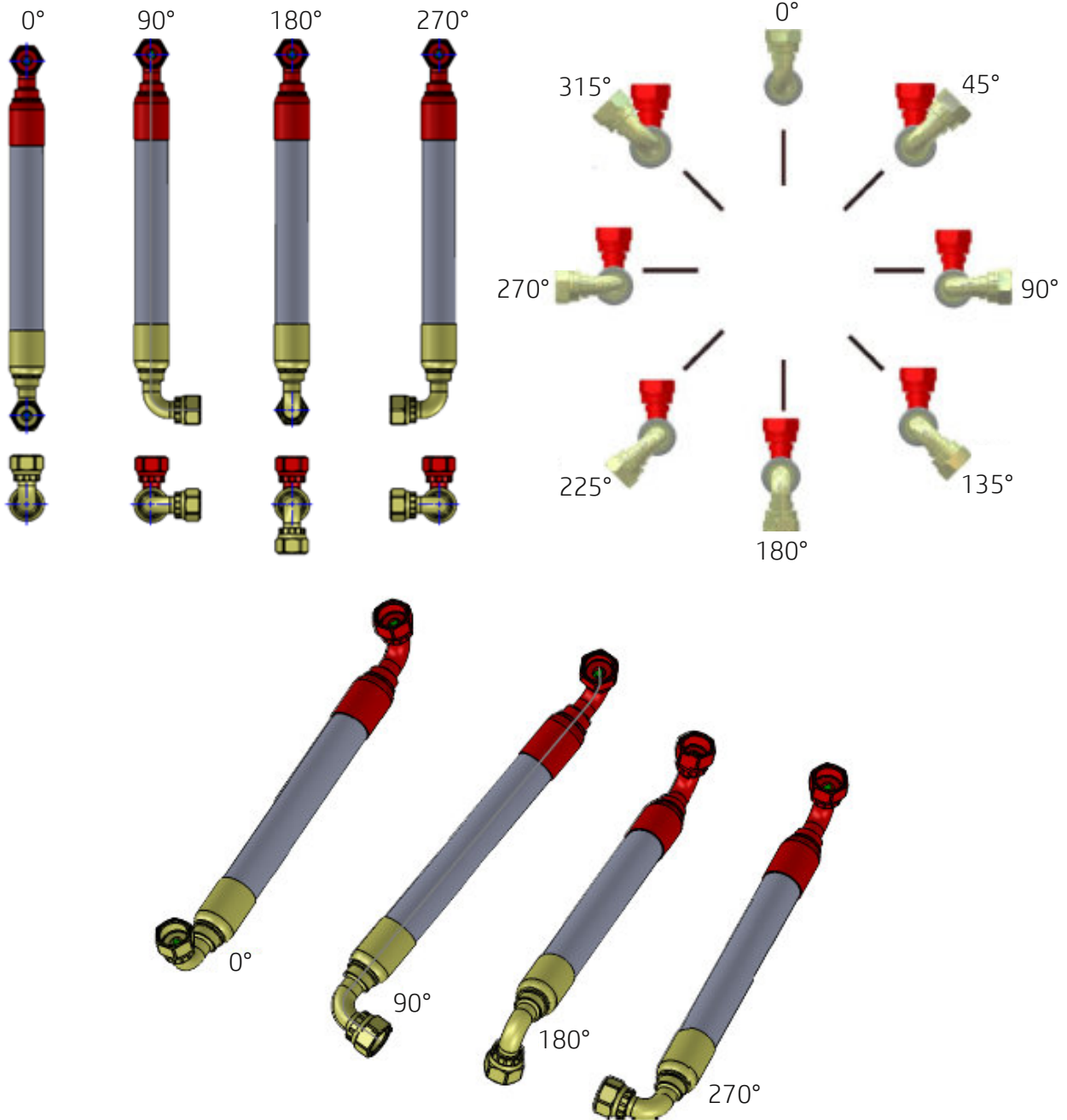
Copyright Detroit Flexible Metal Products. All Rights Reserved

COPYRIGHT 2023



Fitting Clocking

Clocking refers to fitting angles relative to each other on the hose assembly. See guide below:



Sales@detroitflexdefense.com

2921 Industrial Row | Troy, MI 48084

DFD 248.280.0030 FAX 248.280.0038

Copyright Detroit Flexible Metal Products. All Rights Reserved

COPYRIGHT 2023



Hose Covering Types

Fire Sleeve



- Silicone dipped fiberglass braid
- Fire Resistant up to 260°C
- Custom colors available

Abrasion Sleeve



- Braided Nylon Sleeve
- Offers UV and abrasion protection

Spiral Wrap



- Spiral wound HDPE
- Offers premium kink resistance
- -20°C - +85°C temperature range

Heat Rejection Sleeve



- Aluminized fiberglass braid
- Heat rejection up to 200°C
- Flexible hose and rigid tube compatible

Sales@detroitflexdefense.com

2921 Industrial Row | Troy, MI 48084

DFD 248.280.0030 FAX 248.280.0038

Copyright Detroit Flexible Metal Products. All Rights Reserved

COPYRIGHT 2023



Insulation Options

Detroit Flex Defense offers a number of custom insulation options including braided fiberglass fire sleeve, expanded silicone sponge, and high-end aerogel wrap. Insulation sleeves are available in custom colors or can be covered with an additional braid layer for a clean finish.



Sales@detroitflexdefense.com

2921 Industrial Row | Troy, MI 48084

DFD 248.280.0030 FAX 248.280.0038

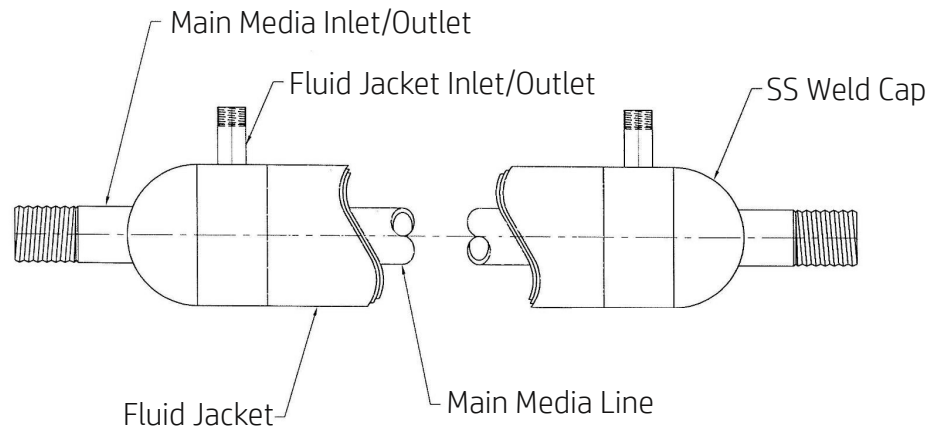
Copyright Detroit Flexible Metal Products. All Rights Reserved



Temperature Controlled Assemblies

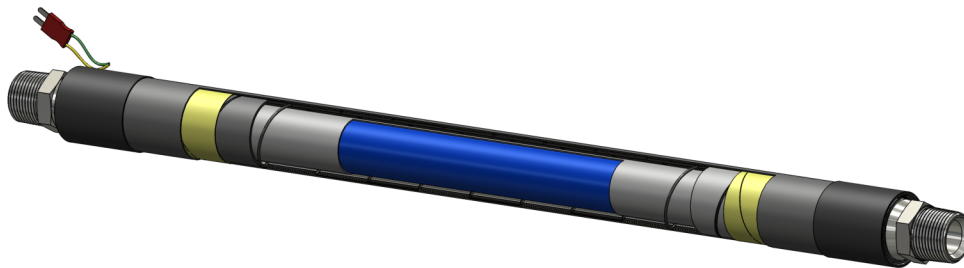
Fluid Jacketed Hose Assembly

A fluid jacketed assembly, also known as a hose-in-hose assembly utilizes either heated or cooled fluid running through the outer flexible hose to control the temperature of the media flowing through the inner flexible hose.



Electronic Heated Hose Assembly

For applications requiring extremely accurate temperature control, we offer electric heated flexible hose assemblies. Temperatures can reach as high as 800°F.



Sales@detroitflexdefense.com

2921 Industrial Row | Troy, MI 48084

DFD 248.280.0030 FAX 248.280.0038

Copyright Detroit Flexible Metal Products. All Rights Reserved

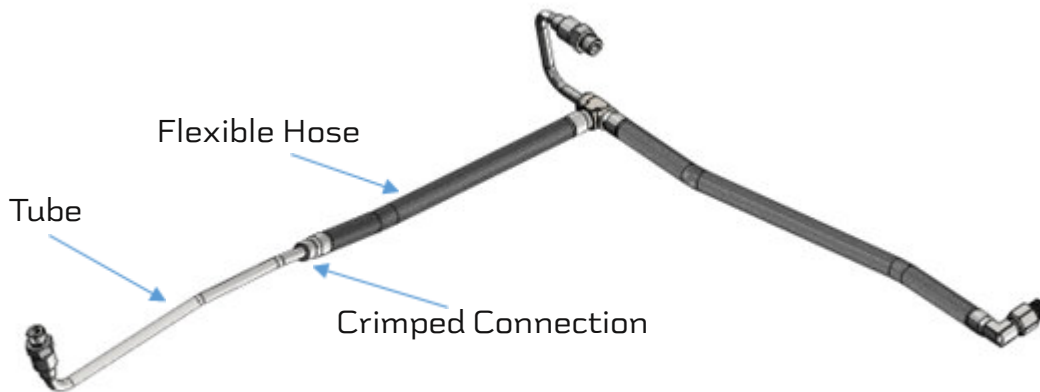
COPYRIGHT 2023



Specialty Assemblies

Hose-Tube Combination Assemblies

Hose-Tube Combination Assemblies are used to achieve better fitment into the customer's application. The tube to hose connection interface can be either welded or crimped.



Formed Hose Assemblies

Formed Hose Assemblies are used as a lighter and better performing alternative to rigid bent tube. Formed flexible hose eliminates fatigue from misalignment and vibration and is beneficial where system servicability is required.



Sales@detroitflexdefense.com

2921 Industrial Row | Troy, MI 48084

DFD 248.280.0030 FAX 248.280.0038

Copyright Detroit Flexible Metal Products. All Rights Reserved

COPYRIGHT 2023



Installation

Torque values shown are for listed materials only. These values apply to flared, (SAE J516) or flareless, (NAS1760), end types only. It is the user's responsibility to use a properly calibrated torque wrench. An adjustable break-over torque wrench is recommended. Torque values shown were established with contacting surfaces lubricated with SAE 30W oil. Use of other lubricants during assembly may require the user to adjust the torque values accordingly.

Torque Values

Steel, Stainless Steel and Titanium				Aluminum		
Fitting Size	Dash Size	Minimum (IN-LB)	Maximum (IN-LB)	Dash Size	Minimum (IN-LB)	Maximum (IN-LB)
0.125	-02	75	120	-02	50	80
0.187	-03	95	140	-03	70	105
0.250	-04	135	190	-04	100	140
0.312	-05	170	240	-05	130	180
0.375	-06	215	280	-06	150	195
0.500	-08	470	550	-08	270	350
0.625	-10	620	745	-10	360	430
0.750	-12	855	1055	-12	460	550
1.000	-16	1140	1370	-16	700	840
1.250	-20	1520	1825	-20	850	1020
1.500	-24	1900	2280	-24	900	1080
2.000	-32	2660	2940	-32	1800	2000

Sales@detroitflexdefense.com

2921 Industrial Row | Troy, MI 48084

DFD 248.280.0030 FAX 248.280.0038

Copyright Detroit Flexible Metal Products. All Rights Reserved



H9059 Series

Low Pressure | Heavy Duty | **Convuluted** PTFE Hose



SPECIFICATION:

- Similar to AS620

CONSTRUCTION:

- CRES 304 SS High Tensile Braid
- Heavy Gauge Wire Wrap
- Convuluted, Non-Conductive, Natural PTFE Innercore

INTEGRAL SLEEVE OPTIONS:

- EPDM Rubber Sleeve
- Silicone Rubber Sleeve

OPERATING TEMP:

- -100°F to +500°F

VACUUM RATING:

- -26.58 inHg for all sizes up to 2"

FEATURES:

- Kink Resistant
- Vacuum Resistant
- Easy Clean and Drain
- Low Friction

APPLICATION:

H9059 hose combines a unique convoluted PTFE core that is lined with heavy gauge wire making it fully kink and vacuum resistant, while maintaining a tight bend radius. This hose is an excellent choice for food, chemical, and pharmaceutical applications that require strength, flexibility and cleanability.

HOSE PART NUMBER	HOSE SIZE (IN)	NOMINAL I.D. (IN)	NOMINAL O.D. (IN)	MAX OPERATING PRESSURE (PSI)	BURST PRESSURE (PSI)	BEND RADIUS (IN)	HOSE WEIGHT (LBS/FT)	MAX CONTINUOUS LENGTH (FT)
H9059-08	1/2	0.440	0.700	595	6,525	1.50	0.220	100
H9059-12	3/4	0.620	0.910	505	3,480	2.00	0.300	100
H9059-16	1	0.847	1.140	450	2,900	2.75	0.470	100
H9059-20	1 1/4	1.080	1.530	390	2,610	3.25	0.550	100
H9059-24	1 1/2	1.250	1.740	335	1,740	4.00	1.010	100
H9059-32	2	1.690	2.190	290	1,450	5.50	1.410	100
H9059-40	2 1/2	2.120	2.830	230	1,015	7.00	1.730	65
H9059-48	3	2.500	3.370	205	870	9.00	2.200	65
H9059-64	4	3.860	4.280	145	580	11.75	3.380	32
H9059-96	6	5.250	5.870	73	290	23.75	6.700	28

NOTES: Table dimensions are nominal. Pressure and vacuum ratings may change according to end connections. For every 1.8°F above 302°F, vacuum resistance should be reduced by 1%

Sales@detroitflexdefense.com

2921 Industrial Row | Troy, MI 48084

DFD 248.280.0030 FAX 248.280.0038

Copyright Detroit Flexible Metal Products. All Rights Reserved

H9059 REV:B COPYRIGHT 2023



H9059PB Series

Low Pressure | Heavy Duty | Convoluted PTFE Hose



SPECIFICATION:

- Similar to AS620

CONSTRUCTION:

- Polypropylene High Tensile Braid
- Heavy Gauge Wire Wrap
- Convoluted, Non-Conductive, Natural PTFE Innercore

INTEGRAL SLEEVE OPTIONS:

- EPDM Rubber Sleeve
- Silicone Rubber Sleeve

OPERATING TEMP:

- -22°F to +212°F

VACUUM RATING:

- -26.58 inHg for all sizes up to 2"

FEATURES:

- Kink Resistant
- Vacuum Resistant
- Easy Clean and Drain
- Low Friction

APPLICATION:

H9059PB hose combines a unique convoluted PTFE core that is lined with heavy gauge wire making it fully kink and vacuum resistant, while maintaining a tight bend radius. This hose is an excellent choice for food, chemical, and pharmaceutical applications that require strength, flexibility and cleanability.

HOSE PART NUMBER	HOSE SIZE (IN)	NOMINAL I.D. (IN)	NOMINAL O.D. (IN)	MAX OPERATING PRESSURE (PSI)	BURST PRESSURE (PSI)	BEND RADIUS (IN)	HOSE WEIGHT (LBS/FT)	MAX CONTINUOUS LENGTH (FT)
H9059PB-08	1/2	0.440	0.800	450	2,175	1.50	0.170	100
H9059PB-12	3/4	0.620	1.020	375	1,520	2.00	0.240	100
H9059PB-16	1	0.847	1.250	334	1,350	2.75	0.380	100
H9059PB-20	1 1/4	1.080	1.720	290	1,175	3.25	0.440	100
H9059PB-24	1 1/2	1.250	1.920	245	1,000	4.00	0.800	100
H9059PB-32	2	1.690	2.370	215	870	5.50	1.130	100
H9059PB-40	2 1/2	2.120	3.010	175	695	7.00	1.380	65
H9059PB-48	3	2.500	3.530	145	610	9.00	1.760	65
H9059PB-64	4	3.860	4.440	115	435	11.75	2.670	32

NOTES: Table dimensions are nominal. Pressure and vacuum ratings may change according to end connections. For applications over 176°F, reduce operating pressure by 50%

Sales@detroitflexdefense.com

2921 Industrial Row | Troy, MI 48084

DFD 248.280.0030 FAX 248.280.0038

Copyright Detroit Flexible Metal Products. All Rights Reserved

H9059PB REV:A COPYRIGHT 2023



H9007 / H9008

Medium Pressure | Light Weight | **Smoothbore** PTFE Hose



H9007

H9008

SPECIFICATION:

- SAE 100R14
- FDA 21 CFR 177.1550

CONSTRUCTION:

- CRES 304 SS High Tensile Braid
- Smoothbore, Natural PTFE Inner Core
- Non-Conductive and Conductive Options Available

INTEGRAL SLEEVE OPTIONS:

- Extruded Hytrel Sleeve
- Extruded Silicone Fire Sleeve

OPERATING TEMP:

- -76°F to +500°F

FEATURES:

- Low Friction Core
- Excellent Chemical Compatibility
- Moisture Resistant

APPLICATION:

Smoothbore PTFE hose made to meet or exceed the SAE 100R14 specifications. Excellent choice for both high or low temperature applications.

HOSE PART NUMBER		HOSE SIZE (IN)	NOMINAL I.D. (IN)	NOMINAL O.D. (IN)	MAX OPERATING PRESSURE (PSI)	BURST PRESSURE (PSI)	BEND RADIUS (IN)	HOSE WEIGHT (LBS/FT)
NON-CONDUCTIVE	CONDUCTIVE							
H9007-03	H9008-03	3/16	0.132	0.264	3,000	12,000	2.00	0.047
H9007-04	H9008-04	1/4	0.194	0.302	3,000	12,000	2.00	0.077
H9007-05	H9008-05	5/16	0.257	0.374	3,000	12,000	3.00	0.098
H9007-06	H9008-06	3/8	0.319	0.433	2,500	10,000	4.00	0.110
H9007-07	H9008-07	7/16	0.382	0.498	2,250	9,000	4.50	0.124
H9007-08	H9008-08	1/2	0.417	0.536	2,000	8,000	5.20	0.125
H9007-10	H9008-10	5/8	0.511	0.633	1,500	6,000	6.50	0.154
H9007-12	H9008-12	3/4	0.636	0.763	1,200	4,800	7.70	0.170
H9007-14	H9008-14	7/8	0.757	0.874	1,100	4,400	8.20	0.198
H9007-16	H9008-16	1	0.893	1.007	1,000	4,000	9.00	0.273
H9007-18	H9008-18	1 1/8	1.007	1.124	900	3,600	10.00	0.305
H9007-20	H9008-20	1 1/4	1.124	1.250	750	3,000	16.00	0.350

NOTES: Table Dimensions Are Nominal. Pressure and Vacuum Ratings May Change According to End Connections. For Higher Working Pressure, see Double Braid Version H9007Z and H9008Z.

Sales@detroitflexdefense.com

2921 Industrial Row | Troy, MI 48084

DFD 248.280.0030 FAX 248.280.0038

Copyright Detroit Flexible Metal Products. All Rights Reserved

H9007/H9008 REV:A COPYRIGHT 2023



H9044

Medium Pressure | Light Weight | **Smoothbore** PTFE Hose



SPECIFICATION:

- SAE 100R14

CONSTRUCTION:

- CRES 304 SS High Tensile Braid
- .040" Wall, Smoothbore, Conductive PTFE Inner Core

OPERATING TEMP:

- -65°F to +400°F

FEATURES:

- Low Friction Core
- Excellent Chemical Compatibility
- Moisture Resistant

APPLICATION:

Smoothbore PTFE hose made to meet or exceed the SAE 100R14 specifications. Great choice for high or low temperature applications in harsh environments.

HOSE PART NUMBER	HOSE SIZE (IN)	NOMINAL I.D. (IN)	NOMINAL O.D. (IN)	MAX OPERATING PRESSURE (PSI)	BURST PRESSURE (PSI)	BEND RADIUS (IN)	HOSE WEIGHT (LBS/FT)
H9044-03	3/16	0.125	0.260	1,500	12,000	2.00	0.060
H9044-04	1/4	0.188	0.324	1,500	12,000	2.00	0.087
H9044-05	5/16	0.250	0.381	1,500	10,000	2.00	0.099
H9044-06	3/8	0.313	0.450	1,500	9,000	4.00	0.123
H9044-08	1/2	0.406	0.570	1,500	8,000	4.63	0.158
H9044-10	5/8	0.500	0.664	1,500	7,000	5.50	0.205
H9044-12	3/4	0.630	0.789	1,000	5,000	6.50	0.327
H9044-16	1	0.879	1.109	1,500	5,000	7.38	0.580

NOTES: Table Dimensions Are Nominal. Pressure and Vacuum Ratings May Change According to End Connections. For Higher Working Pressure, Double Braid Version See H9007Z

Sales@detroitflexdefense.com

2921 Industrial Row | Troy, MI 48084

DFD 248.280.0030 FAX 248.280.0038

Copyright Detroit Flexible Metal Products. All Rights Reserved

H9044 REV:B COPYRIGHT 2023



H9016

Medium Pressure | Post-Sintered | Smoothbore PTFE Hose



SPECIFICATION:

- Similar to AS1946
- Similar to MIL-DTL-25579/MIL-H-H27267 Construction
- Compliant to NFPA: 58, 2014 Edition, Section 5.9.6
- Compliant to CSA: CAN/CGA-8.1-M86

CONSTRUCTION:

- CRES 304 SS High Tensile Outer Braid
- .040" Wall Thickness, Post Sintered, Smoothbore, Conductive PTFE Innercore

FEATURES:

- Excellent Chemical Compatibility
- Low Gas Effusion Rate
- Moisture Resistance

OPERATING TEMP:

- -65°F to +400°F

INTEGRAL SLEEVE OPTIONS:

- Extruded Silicone Fire Sleeve
- Extruded Hytrel Sleeve
- Extruded Santoprene Sleeve
- Braided Polyester Chafe Sleeve
- Braided Nylon 6 Chafe Sleeve

APPLICATION:

A great light-weight option for medium pressure applications. Post-sintered core allows for the lowest effusion levels in gas applications, while several exterior cover options make this a great choice for harsh environments. Compliant for use on LPG systems.

HOSE PART NUMBER	HOSE SIZE (IN)	NOMINAL I.D. (IN)	NOMINAL O.D. (IN)	MAX OPERATING PRESSURE (PSI)	BURST PRESSURE (PSI)	BEND RADIUS (IN)	HOSE WEIGHT (LBS/FT)
H9016-03	3/16	0.130	0.260	1,500	12,000	2.00	0.060
H9016-04	1/4	0.188	0.324	1,500	12,000	2.00	0.087
H9016-05	5/16	0.250	0.381	1,500	10,000	2.00	0.099
H9016-06	3/8	0.313	0.450	1,500	9,000	4.00	0.123
H9016-08	1/2	0.406	0.566	1,500	8,000	4.63	0.158
H9016-10	5/8	0.500	0.664	1,500	7,000	5.50	0.205
H9016-12	3/4	0.630	0.789	1,000	5,000	6.50	0.327
H9016-16Z	1	0.879	1.109	1,250	5,000	7.38	0.580

NOTES: H9016-16Z comes standard with double layer SS braid. Table dimensions are nominal. Pressure and vacuum ratings may change according to end connections

Sales@detroitflexdefense.com

2921 Industrial Row | Troy, MI 48084

DFD 248.280.0030 FAX 248.280.0038

Copyright Detroit Flexible Metal Products. All Rights Reserved

H9016 REV:E COPYRIGHT 2023



H9024 Series

Medium Pressure | Formable | **Smoothbore** PTFE Hose



SPECIFICATION:

- Similar to AS1946 Construction
- Exceeds SAE J30R10, J30R11 and J30R12.
- Fire resistant per SAE J1527 Sections 5 and 6.
- Meets Ford ES-YU5A-9J279-AB and GM6130

CONSTRUCTION:

- 90% Fiberglass, 10% Aramid Braid, PTFE Bonded
- Smoothbore, Conductive PTFE Innercore

OPERATING TEMP:

- -40°F to +500°F

FEATURES:

- Very Low Permeation
- Fire Resistant
- Formable

APPLICATION:

Excellent option for automotive fuel, vacuum and hydraulic applications. Low effusion rate and formability lends itself to fuel transfer applications where space claim is tight. Unique composite braid provides enhanced thermal insulation and fire resistance.

HOSE PART NUMBER	HOSE SIZE (IN)	NOMINAL I.D. (IN)	NOMINAL O.D. (IN)	MAX OPERATING PRESSURE (PSI)	BURST PRESSURE (PSI)	BEND RADIUS (IN)	FORMED BEND RADIUS (IN)	HOSE WEIGHT (LBS/FT)
H9024-05	1/4	0.252	0.413	1,000	6,200	2.00	1.25	0.062
H9024-06	5/16	0.309	0.475	1,000	7,300	3.00	1.25	0.080
H9024-07	3/8	0.371	0.565	750	6,100	3.50	1.50	0.110
H9024-08	7/16	0.430	0.595	750	3,000	4.00	2.00	0.122

NOTES: Table dimensions are nominal. Pressure and vacuum ratings may change according to end connections

Sales@detroitflexdefense.com

2921 Industrial Row | Troy, MI 48084

DFD 248.280.0030 FAX 248.280.0038

Copyright Detroit Flexible Metal Products. All Rights Reserved

H9024 REV:C COPYRIGHT 2023



H9032 Series

Medium Pressure | Brake Line | Smoothbore PTFE Hose



SPECIFICATION:

- Braided in Accordance with TMS5004/16

CONSTRUCTION:

- CRES 304 SS High Tensile Braid
- Kevlar Inner Braid
- Hytrel Liner
- Smoothbore, Non-Conductive PTFE Innercore

INTEGRAL SLEEVE OPTIONS:

- PVC Chafe Sleeve

MAX OPERATING TEMP:

- 275°F

FEATURES:

- Extremely Low Expansion
- Rugged Construction
- Infinite Shelf Life

APPLICATION:

The ultimate brake assembly option, H9032 sees virtually no volumetric expansion under pressure making it a far better option than other rubber or PTFE brake lines. H9032 also has an infinite shelf life, unlike traditional rubber lines.

HOSE PART NUMBER	HOSE SIZE (IN)	NOMINAL I.D. (IN)	NOMINAL O.D. (IN)	MAX OPERATING PRESSURE (PSI)	BURST PRESSURE (PSI)	BEND RADIUS (IN)	HOSE WEIGHT (LBS/FT)
H9032-03	3/16	0.190	0.040	1,750	7,000	3.00	0.110

NOTES: Table dimensions are nominal. Pressure and vacuum ratings may change according to end connections

Sales@detroitflexdefense.com

2921 Industrial Row | Troy, MI 48084

DFD 248.280.0030 FAX 248.280.0038

Copyright Detroit Flexible Metal Products. All Rights Reserved

H9032 REV:A COPYRIGHT 2023



H9034 Series

Medium Pressure | Fireproof | Smoothbore PTFE Hose



SPECIFICATION:

- Fire Resistant to AS1055 Type IIA/ IIB, Class B When Using AS1072 Fire Sleeve

CONSTRUCTION:

- Double Layer 70% Fiberglass 30% Aramid Braid, PTFE Bonded
- Heavy Wall, Post-Sintered, Conductive PTFE Innercore

FEATURES:

- Low Permeation
- Fireproof
- Formable

OPERATING TEMP:

- -100°F to +325°F

APPLICATION:

This one-of-a-kind hose combines an anti-static PTFE core with a unique composite braid making it both fireproof and formable. This hose is an excellent choice for high-temp applicaitons that require unique routing and high pressure gas applicaitons where permeation is a concern.

HOSE PART NUMBER	HOSE SIZE (IN)	NOMINAL I.D. (IN)	NOMINAL O.D. (IN)	MAX OPERATING PRESSURE (PSI)	BURST PRESSURE (PSI)	BEND RADIUS (IN)	HOSE WEIGHT (LBS/FT)
H9034-05	5/16	0.212	0.430	2,200	9,000	3.00	0.084

NOTES: Table dimensions are nominal. Pressure and vacuum ratings may change according to end connections



Sales@detroitflexdefense.com

2921 Industrial Row | Troy, MI 48084

DFD 248.280.0030 FAX 248.280.0038

Copyright Detroit Flexible Metal Products. All Rights Reserved

H9034 REV:B COPYRIGHT 2023



H9052

Medium Pressure | Insulated | Smoothbore PTFE Hose



SPECIFICATIONS:

- Meets SAE J1942-1 and SAE J1527 Type A, Class 1 and Class 2, Style R1

CONSTRUCTION:

- Extruded Silicone Jacket
- CRES 304 SS High Tensile Braid
- High Temperature Insulation
- Fiberglass/Aramid Composite Inner Braid
- .030" Wall. Smoothbore, Conductive PTFE Innercore

OPERATING TEMP:

- -100°F to +450°F

FEATURES:

- Kink Resistant
- Fire Resistant
- High/Low Temperature Resistant

APPLICATION:

For applications where insulation, cleanability, flexibility and kink resistance are necessary, H9052 is the ultimate choice. This hose performs extremely well at high and low temperatures while the smoothbore innercore and extruded silicone cover keep the hose sanitary and easy to clean.

HOSE PART NUMBER	HOSE SIZE (IN)	NOMINAL I.D. (IN)	NOMINAL O.D. (IN)	MAX OPERATING PRESSURE (PSI)	BURST PRESSURE (PSI)	BEND RADIUS (IN)
H9052-06	3/8	0.290	0.575	800	3,200	2.25
H9052-07	7/16	0.350	0.630	750	3,000	2.75
H9052-10	5/8	0.500	0.793	750	3,000	4.25
H9052-14	7/8	0.770	1.073	500	2,000	6.50

NOTES: Table dimensions are nominal. Pressure and vacuum ratings may change according to end connections



Sales@detroitflexdefense.com

2921 Industrial Row | Troy, MI 48084

DFD 248.280.0030 FAX 248.280.0038

Copyright Detroit Flexible Metal Products. All Rights Reserved

H9052 REV:B COPYRIGHT 2023



H9001 / H9002

Medium Pressure | Tape Wrapped | **Convolut**ed PTFE Hose



H9001

H9002

SPECIFICATION:

- Similar to AS620 Construction

CONSTRUCTION:

- CRES 304 SS High Tensile Braid
- Tape Wrapped, Convolut
- Non-Conductive and Conductive Options Available

INTEGRAL SLEEVE OPTIONS:

- Braided Nylon 6 Chafe Sleeve

OPERATING TEMP:

- -65°F to +400°F

FEATURES:

- Extremely Flexible
- Excellent Chemical Compatibility
- Corrosion Resistant
- Excellent Vacuum Resistance

APPLICATION:

Excellent hose for medium pressure industrial applications involving even the most aggressive chemicals. The tape wrapped core allows the hose to operate very well under frequent thermal cycling, while the convolut

HOSE PART NUMBER		HOSE SIZE (IN)	NOMINAL I.D. (IN)	NOMINAL O.D. (IN)	MAX OPERATING PRESSURE (PSI)	BURST PRESSURE (PSI)	BEND RADIUS (IN)	HOSE WEIGHT (LBS/FT)	VACUUM RATING (IN/HG)
NON-CONDUCTIVE	CONDUCTIVE								
H9001-06	H9002-06	3/8	0.375	0.590	1,000	4,000	1.00	0.12	28
H9001-08	H9002-08	1/2	0.500	0.760	1,250	5,000	1.50	0.20	28
H9001-10	H9002-10	5/8	0.625	0.910	1,400	5,600	2.00	0.38	28
H9001-12	H9002-12	3/4	0.750	1.070	1,100	4,400	2.50	0.33	28
H9001-16	H9002-16	1	1.000	1.340	1,000	4,000	3.00	0.43	25
H9001-20	H9002-20	1 1/4	1.250	1.570	1,000	4,000	3.50	0.53	20
H9001-24	H9002-24	1 1/2	1.500	1.810	750	3,000	4.50	0.65	12
H9001-32	H9002-32	2	2.000	2.320	500	2,000	5.25	0.73	5

NOTES: Table dimensions are nominal. Pressure and vacuum ratings may change according to end connections

Sales@detroitflexdefense.com

2921 Industrial Row | Troy, MI 48084

DFD 248.280.0030 FAX 248.280.0038

Copyright Detroit Flexible Metal Products. All Rights Reserved

H9001/H9002 REV:A COPYRIGHT 2023



H9070 / H9071

Medium Pressure | Tape Wrapped | Convoluted PTFE Hose



H9070

H9071

SPECIFICATION:

- DNV GL Class Programme CP-0183

CONSTRUCTION:

- CRES 304 SS High Tensile Braid
- Tape Wrapped, Convoluted PTFE Innercore
- Non-Conductive and Conductive Options Available

INTEGRAL SLEEVE OPTIONS:

- Braided Nylon 6 Chafe Sleeve

OPERATING TEMP:

- -58°F to +401°F

FEATURES:

- Extremely Flexible
- Flame Resistant
- Excellent Vacuum Resistance

APPLICATION:

The ideal hose for demanding marine and offshore applications, the convoluted core of this hose provides a superior bend radius and vacuum resistance. With its PTFE core, the hose is extremely corrosion resistant and compatible with all common fluids and gasses.

HOSE PART NUMBER		HOSE SIZE (IN)	NOMINAL I.D. (IN)	NOMINAL O.D. (IN)	MAX OPERATING PRESSURE (PSI)	BURST PRESSURE (PSI)	BEND RADIUS (IN)	HOSE WEIGHT (LBS/FT)	VACUUM RATING (IN/HG)
NON-CONDUCTIVE	CONDUCTIVE								
H9070-06	H9071-06	3/8	0.380	0.622	1,813	7,252	1.97	0.12	26.58
H9070-08	H9071-08	1/2	0.530	0.780	1,523	6,092	2.56	0.20	26.58
H9070-10	H9071-10	5/8	0.646	0.921	1,450	5,800	3.15	0.38	26.58
H9070-12	H9071-12	3/4	0.780	1.059	1,305	5,220	3.94	0.33	26.58
H9070-16	H9071-16	1	0.984	1.295	1,160	4,640	4.92	0.43	26.58
H9070-20	H9071-20	1 1/4	1.272	1.565	928	3,712	5.91	0.53	26.58
H9070-24	H9071-24	1 1/2	1.508	1.815	769	3,076	7.87	0.65	26.58
H9070-32	H9071-32	2	2.028	2.382	508	2,032	9.84	0.73	14.77

NOTES: Table dimensions are nominal. Pressure and vacuum ratings may change according to end connections. For continuous use at 400°F, reduce working pressure by 50%

Sales@detroitflexdefense.com

2921 Industrial Row | Troy, MI 48084

DFD 248.280.0030 FAX 248.280.0038

Copyright Detroit Flexible Metal Products. All Rights Reserved

H9070/H9071 REV:A COPYRIGHT 2023



H9018 Series

Medium Pressure | Aramid Braid | **Convolute** PTFE Hose



SPECIFICATION:

- Meets AS620/AS1227 Performance Requirements

CONSTRUCTION:

- Aramid Fiber Braid
- Convolute, Conductive PTFE Innercore

ADDITIONAL BRAID OPTIONS:

- Nylon Braid
- Spectra Braid
- Nomex Braid
- ZylonBraid

OPERATING TEMP:

- -49°F to +338°F

FEATURES:

- Extremely Flexible
- Ultra-Light Weight
- Excellent Chemical Compatibility

APPLICATION:

With its unique aramid braid and convolute design, this hose is lighter, stronger, and more flexible than most stainless-steel braided hoses on the market. The conductive lined PTFE innercore makes this hose safe to use with virtually any chemical.

HOSE PART NUMBER	HOSE SIZE (IN)	NOMINAL I.D. (IN)	NOMINAL O.D. (IN)	MAX OPERATING PRESSURE (PSI)	BURST PRESSURE (PSI)	BEND RADIUS (IN)	HOSE WEIGHT (LBS/FT)
H9018-04	1/4	0.280	0.445	1,025	4,850	0.79	0.05
H9018-06	3/8	0.375	0.567	940	3,760	0.99	0.06
H9018-08	1/2	0.525	0.756	850	3,450	0.99	0.09
H9018-10	5/8	0.630	0.846	735	2,930	1.26	0.11
H9018-12	3/4	0.768	1.008	510	2,495	1.58	0.13
H9018-16	1	1.000	1.335	485	1,950	1.97	0.16
H9018-20	1 1/4	1.250	1.457	367	1,102	2.76	0.31

NOTES: Table dimensions are nominal. Pressure and vacuum ratings may change according to end connections. Specifications in table are for Aramid Braid, additional braid options will effect pressure ratings.

Sales@detroitflexdefense.com

2921 Industrial Row | Troy, MI 48084

DFD 248.280.0030 FAX 248.280.0038

Copyright Detroit Flexible Metal Products. All Rights Reserved

H9018 REV:B COPYRIGHT 2023



H9037 / H9038

Medium Pressure | Smoothbore/Convuluted PTFE Hose



H9037

H9038

SPECIFICATION:

- Similar to AS620/AS1227 Construction

CONSTRUCTION:

- CRES 304 SS High Tensile Braid
- Heavy Wall, Smoothbore ID/Convuluted OD PTFE Innercore
- Non-Conductive and Conductive Options Available

INTEGRAL SLEEVE OPTIONS:

- Extruded PVC Chafe Sleeve
- Extruded Nylon 11 Sleeve
- Extruded Hytrel Sleeve
- Extruded EPDM Rubber Sleeve
- Extruded Silicone Rubber Sleeve

OPERATING TEMP:

- -100°F to +500°F

VACUUM RATING:

- -26.58 inHg for all sizes up to 300°F

FEATURES:

- Extremely Flexible
- Kink Resistant
- Low Effusion

APPLICATION:

The PTFE Innercore of this hose combines a Convuluted OD and Smoothbore ID, making the hose extremely flexible and kink resistant while maintaining a smooth flow at a high rate. This is an excellent choice for sanitary applicaitons that require a tight bend radius.

HOSE PART NUMBER		HOSE SIZE (IN)	NOMINAL I.D. (IN)	NOMINAL O.D. (IN)	MAX OPERATING PRESSURE (PSI)	BURST PRESSURE (PSI)	BEND RADIUS (IN)	HOSE WEIGHT (LBS/FT)
NON-CONDUCTIVE	CONDUCTIVE							
H9037-04	H9038-04	1/4	0.270	0.378	960	3,840	0.75	0.062
H9037-05	H9038-05	5/16	0.312	0.420	915	3,660	0.75	0.084
H9037-06	H9038-06	3/8	0.394	0.534	870	3,480	1.00	0.107
H9037-08	H9038-08	1/2	0.536	0.690	652	2,608	1.50	0.151
H9037-10	H9038-10	5/8	0.658	0.831	547	2,188	2.00	0.226
H9037-12	H9038-12	3/4	0.780	0.953	457	1,828	2.50	0.257
H9037-16	H9038-16	1	1.023	1.250	435	1,740	3.00	0.362

NOTES: Max operating pressure shall be reduced by 1% for each 1.8°F above 320°F. Table dimensions are nominal. Pressure and vacuum ratings may change according to end connections

Sales@detroitflexdefense.com

2921 Industrial Row | Troy, MI 48084

DFD 248.280.0030 FAX 248.280.0038

Copyright Detroit Flexible Metal Products. All Rights Reserved

H9037/H9038 REV:A COPYRIGHT 2023



H9045 / H9046

Medium Pressure | Smoothbore/Convoluted PTFE Hose



H9045

H9046

SPECIFICATION:

- Similar to AS620/AS1227

CONSTRUCTION:

- Aramid Fiber Braid
- Heavy Wall, Smoothbore ID, Convoluted OD PTFE Innercore
- Non-Conductive and Conductive Options Available

INTEGRAL SLEEVE OPTIONS:

- Extruded PVC Chafe Sleeve
- Extruded Nylon 11 Sleeve
- Extruded Hytrel Sleeve
- Extruded EPDM Rubber Sleeve
- Extruded Silicone Rubber Sleeve

OPERATING TEMP:

- -100°F to +500°F

FEATURES:

- Low Friction Core
- Excellent Chemical Compatibility
- Moisture Resistant

APPLICATION:

The PTFE innercore of this hose combines a convoluted OD with a smoothbore ID, making the hose extremely flexible while maintaining a smooth, high flow rate. H9045/46 also has an Aramid Fiber braid, giving it the operating pressure of a stainless steel braided hose while being significantly lighter.

FITTINGS:

- BAF Barb Series, See Page 23
- Custom Fittings Available

HOSE PART NUMBER		SIZE	NOMINAL I.D.	NOMINAL O.D.	WORKING PRESSURE PSI	BURST PRESSURE PSI	WEIGHT LBS PER FT	MIN BEND RADIUS INCHES
NON-CONDUCTIVE	CONDUCTIVE							
H9046-04	H9045-04	-4	0.270	0.406	1320	5290	0.0367	0.925
H9046-06	H9045-06	-6	0.375	0.572	1180	4700	0.0591	0.787
H9046-08	H9045-08	-8	0.500	0.65	1030	4120	0.0947	1.426
H9046-10	H9045-10	-10	0.625	0.819	955	3820	0.1351	1.772
H9046-12	H9045-12	-12	0.750	0.961	880	3530	0.1962	1.969
H9046-16	H9045-16	-16	1.000	1.272	740	2940	0.3199	2.756

NOTES: Max operating pressure shall be reduced by 1% for each 1.8°F above 320°F. Table dimensions are nominal. Pressure and vacuum ratings may change according to end connections

Sales@detroitflexdefense.com

2921 Industrial Row | Troy, MI 48084

DFD 248.280.0030 FAX 248.280.0038

Copyright Detroit Flexible Metal Products. All Rights Reserved

H9045/H9046 REV:A COPYRIGHT 2023



H9017 Series

High Pressure | Light Weight | Smoothbore PTFE Hose



SPECIFICATION:

- Similar to AS1339 Construction

CONSTRUCTION:

- Double Layer CRES 304 SS High Tensile Braid
- Smoothbore, Heavy Wall, Conductive PTFE Innercore

INTEGRAL SLEEVE OPTIONS:

- Extruded Silicone Fire Sleeve

OPERATING TEMP:

- -76°F to +500°F

FEATURES:

- High Pressure Rating
- Lightweight
- Excellent Chemical Resistance

APPLICATION:

The ultimate choice for high pressure applications, this hose greatly outperforms its weight in high temp hydraulic applications and the conductive core makes it safe to use with flammable media.

HOSE PART NUMBER	HOSE SIZE (IN)	NOMINAL I.D. (IN)	NOMINAL O.D. (IN)	MAX OPERATING PRESSURE (PSI)	BURST PRESSURE (PSI)	BEND RADIUS (IN)	HOSE WEIGHT (LBS/FT)
H9017-04	1/4	0.222	0.375	5,000	16,000	1.50	0.108
H9017-06	3/8	0.308	0.473	5,000	16,000	2.50	0.180
H9017-08	1/2	0.401	0.600	5,000	16,000	2.88	0.240
H9017-10	5/8	0.495	0.710	5,000	16,000	3.30	0.324
H9017-12	3/4	0.631	0.970	5,000	16,000	4.00	0.660
H9017-16	1	0.867	1.250	5,000	16,000	5.00	1.020
H9017-20	1 1/4	1.125	1.600	4,000	16,000	12.00	1.680
H9017-24	1 1/2	1.375	1.920	4,000	12,000	14.00	2.280

NOTES: Table dimensions are nominal. Pressure and vacuum ratings may change according to end connections. For service above 400°F, operating pressure is 3000 PSI for all sizes. Reduce operating pressure by 1000 PSI for impulse service and pump discharge

Sales@detroitflexdefense.com

2921 Industrial Row | Troy, MI 48084

DFD 248.280.0030 FAX 248.280.0038

Copyright Detroit Flexible Metal Products. All Rights Reserved

H9017 REV:C COPYRIGHT 2023



H9005

High Pressure | Post-Sintered | Smoothbore PTFE Hose



SPECIFICATION:

- Similar to AS1339 Construction
- Compliant to NFPA: 58, 2014, Section 5.9.6
- Compliant to CAS: CAN/CGA-8.1-M86

CONSTRUCTION:

- Double Layer CRES 304 SS High Tensile Braid
- Smoothbore, Post Sintered, Heavy Wall, Conductive PTFE Innercore

INTEGRAL SLEEVE OPTIONS:

- Extruded Silicone Fire Sleeve
- Braided Nylon 6 Chafe Sleeve
- Extruded Santoprene Sleeve
- Braided Polyester Chafe Sleeve

OPERATING TEMP:

- -76°F to +500°F

FEATURES:

- High Pressure Rating
- Moisture Resistant
- Excellent Chemical Resistance

APPLICATION:

The ultimate choice for high pressure applications that require a light weight, reliable assembly. This hose greatly outperforms its weight in high temp hydraulic applications. Post-sintered core allows for the lowest effusion levels in gas applications.

HOSE PART NUMBER	HOSE SIZE (IN)	NOMINAL I.D. (IN)	NOMINAL O.D. (IN)	MAX OPERATING PRESSURE (PSI)	BURST PRESSURE (PSI)	BEND RADIUS (IN)	HOSE WEIGHT (LBS/FT)
H9005-04	1/4	0.222	0.375	5,000	16,000	1.50	0.108
H9005-06	3/8	0.308	0.473	5,000	16,000	2.50	0.180
H9005-08	1/2	0.401	0.600	5,000	16,000	2.88	0.240
H9005-10	5/8	0.495	0.710	5,000	16,000	3.30	0.324
H9005-12	3/4	0.631	0.970	5,000	16,000	4.00	0.660
H9005-16	1	0.867	1.250	5,000	16,000	5.00	1.020

NOTES: Table dimensions are nominal. Pressure and vacuum ratings may change according to end connections. For service above 400°F, operating pressure is 3000 PSI for all sizes. Reduce operating pressure by 1000 PSI for impulse service and pump discharge.

Sales@detroitflexdefense.com

2921 Industrial Row | Troy, MI 48084

DFD 248.280.0030 FAX 248.280.0038

Copyright Detroit Flexible Metal Products. All Rights Reserved

H9005 REV:F COPYRIGHT 2023



H9012 / H9013

High Pressure | Fire Resistant | Smoothbore PTFE Hose



H9012

H9013

SPECIFICATION:

- Similar to AS1946
- Fire Resistant Per SAEJ1527, Sections 5 and 6

CONSTRUCTION:

- CRES 304 SS High Tensile Outer Braid
- Fiberglass/Aramid Composite Braid
- Heavy Wall, Smoothbore, PTFE Innercore
- Non-Conductive and Conductive Options Available

INTEGRAL SLEEVE OPTIONS:

- Extruded Silicone Fire Sleeve

OPERATING TEMP:

- -75°F to +500°F

FEATURES:

- Kink Resistant
- Extreme Flexibility
- Fire Resistant

APPLICATION:

Superior bend radius and kink resistant design make this hose an excellent option for high pressure applications that require unique routing. This hose is made to perform at high or low temperatures and can handle hydraulic fluids, oils, acids and other corrosive chemicals.

HOSE PART NUMBER		HOSE SIZE (IN)	NOMINAL I.D. (IN)	NOMINAL O.D. (IN)	MAX OPERATING PRESSURE (PSI)	BURST PRESSURE (PSI)	STATIC BEND RADIUS (IN)	DYNAMIC BEND RADIUS (IN)	HOSE WEIGHT (LBS/FT)
NON-CONDUCTIVE	CONDUCTIVE								
H9012-04	H9013-04	1/4	0.194	0.377	4,000	16,000	1.25	2.38	0.088
H9012-05	H9013-05	5/8	0.247	0.440	3,500	14,000	1.75	TBD	TBD
H9012-06	H9013-06	3/8	0.290	0.519	3,500	14,000	2.25	3.50	0.163
H9012-07	H9013-07	7/8	0.340	0.572	3,000	12,000	2.75	4.00	0.179
H9012-08	H9013-08	1/2	0.416	0.639	2,500	10,000	3.00	4.50	0.198
H9012-10	H9013-10	5/8	0.502	0.754	1,800	7,200	4.25	5.50	0.241
H9012-12	H9013-12	3/4	0.590	0.864	1,500	6,000	5.50	6.75	0.271
H9012-14	H9013-14	7/8	0.770	0.999	TBD	TBD	TBD	TBD	TBD
H9012-16	H9013-16	1	0.863	1.175	1,200	4,800	7.00	8.50	0.451
H9012-18	H9013-18	1 1/8	1.005	1.405	1,000	4,000	9.00	11.50	0.487

NOTES: Table dimensions are nominal. Pressure and vacuum ratings may change according to end connections

Sales@detroitflexdefense.com

2921 Industrial Row | Troy, MI 48084

DFD 248.280.0030 FAX 248.280.0038

Copyright Detroit Flexible Metal Products. All Rights Reserved

H9012/H9013 REV:A COPYRIGHT 2023



H9019 Series

High Pressure | Formable | **Smoothbore** PTFE Hose



SPECIFICATION:

- Similar to AS5951/AS1975 Construction

CONSTRUCTION:

- Double Layer Aramid Braid, PTFE Bonded
- Heavy Wall, Post Sintered, Smoothbore, Conductive PTFE Innercore

OPERATING TEMP:

- -65°F to +325°F

FEATURES:

- Formable
- High Pressure Rating
- Tight Bend Radius

APPLICATION:

The only choice for critical high-pressure applications where weight is a concern. This hose is designed to be a lighter and more reliable replacement for titanium tubing or stainless steel hose. With the option of forming, H9019 can be designed and routed like rigid tubing, but with a tighter radius. H9019 is also designed to absorb vibrations, decreasing potential failures.

HOSE PART NUMBER	HOSE SIZE (IN)	NOMINAL I.D. (IN)	NOMINAL O.D. (IN)	MAX OPERATING PRESSURE (PSI)	BURST PRESSURE (PSI)	BEND RADIUS (IN)	FORMED BEND RADIUS (IN)	HOSE WEIGHT (LBS/FT)
H9019-040	1/4	0.250	0.390	6,000	24,000	0.93	0.75	0.041
H9019-060	3/8	0.312	0.492	5,100	20,400	1.16	0.75	0.068
H9019-080	1/2	0.425	0.615	5,100	20,400	2.38	1.00	0.090
H9019-100	5/8	0.515	0.909	TBD	TBD	2.42	TBD	0.098
H9019-120	3/4	0.627	1.047	4,000	16,000	3.00	2.25	0.170
H9019-160	1	0.885	1.315	4,000	12,000	5.15	2.75	0.362

NOTES: Table dimensions are nominal. Pressure and vacuum ratings may change according to end connections

Sales@detroitflexdefense.com

2921 Industrial Row | Troy, MI 48084

DFD 248.280.0030 FAX 248.280.0038

Copyright Detroit Flexible Metal Products. All Rights Reserved

H9019 REV:F COPYRIGHT 2023



H9006

Super High Pressure | Post-Sintered | Smoothbore PTFE Hose



SPECIFICATIONS:

- Similar to AS604/AS614 Construction

CONSTRUCTION:

- Double Layer CRES 304 SS High Tensile Braid
- Four Layer Spiral Wrap
- Smoothbore, Heavy Wall, Post-Sintered Conductive PTFE Innercore

INTEGRAL SLEEVE OPTIONS:

- Extruded Silicone Fire Sleeve
- Braided Nylon 6 Chafe Sleeve
- Braided Polyester Chafe Sleeve

OPERATING TEMP:

- -76°F to +500°F

FEATURES:

- High Pressure Rating
- Excellent Chemical Resistance
- Vibration and Impulse Resistant

APPLICATION:

This heavy-duty hose is made to perform in super-high pressure, high impulse and high vibration applications involving hydraulic fluids, oils, acids and other corrosive chemicals. This is the ideal hose for high pressure impulse cycling applications such as injection molding.

HOSE PART NUMBER	HOSE SIZE (IN)	NOMINAL I.D. (IN)	NOMINAL O.D. (IN)	MAX OPERATING PRESSURE (PSI)	BURST PRESSURE (PSI)	BEND RADIUS (IN)	HOSE WEIGHT (LBS/FT)
H9006-04	1/4	0.230	0.485	6,000	24,000	3.00	0.240
H9006-06	3/8	0.303	0.594	6,000	24,000	5.00	0.400
H9006-08	1/2	0.400	0.733	6,000	24,000	5.75	0.490
H9006-10	5/8	0.530	0.910	4,000	12,000	6.25	0.670
H9006-12	3/4	0.655	1.055	4,000	12,000	7.75	0.930
H9006-16	1	0.888	1.325	4,000	12,000	9.63	1.450
H9006-20	1 1/4	1.126	1.610	4,000	12,000	11.00	1.880

NOTES: Table dimensions are nominal. Pressure and vacuum ratings may change according to end connections

Sales@detroitflexdefense.com

2921 Industrial Row | Troy, MI 48084

DFD 248.280.0030 FAX 248.280.0038

Copyright Detroit Flexible Metal Products. All Rights Reserved

H9006 REV:E COPYRIGHT 2023

